

## EXPANDED METAL GRATING

### • Carbon Steel

Style	Diamond	Thick- ness	Std. Sheet Size		Size	Part No.
			Width	Length		
3.0 lbs.	1.44" x 5.0"	1/2"	4', 6'	5', 8', 10'	4' x 8'	Y0650
3.0 lbs.	1.44 x 5.0	1/2"	4', 6'	5', 8', 10'	4' x 10'	Y0651
3.14 lbs.	2.00 x 6.0	9/16"	4', 6'	10'	-	-
4.0 lbs.	1.395 x 5.0	5/8"	4', 5', 6'	8'	4' x 8'	Y0653
4.0 lbs.	1.395 x 5.0	5/8"	4', 5', 6'	8'	4' x 10'	Y0654
4.27 lbs.	1.412 x 4.0	5/8"	4', 6'	8'	-	-
5.0 lbs.	1.143 x 5.0	5/8"	4'	5', 8', 10'	4' x 8'	Y0655
6.25 lbs.	1.412 x 5.0	47/64"	4', 6'	8'	-	-
7.0 lbs.	1.333 x 5.0	3/4"	4'	4'2", 8'4"	-	-

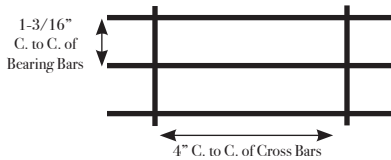
## CARBON STEEL GRATING

- Standard or Serrated
- Available in 24" and 36" widths, 20' and 24' lengths

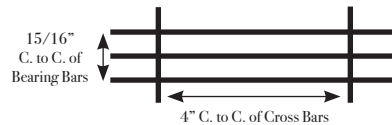
Bearing Bars	Cross Bars	Lbs. per Sq. Ft.	
		Type 1A	Type 1B
3/4" x 1/8"	1/4"	3.99	4.63
3/4" x 3/16"	1/4"	5.67	6.31
1" x 1/8"	1/4"	5.15	5.79
1" x 3/16"	1/4"	7.35	7.99
1-1/4" x 1/8"	1/4"	6.20	6.84
1-1/4" x 3/16"	1/4"	9.03	9.67
1-1/2" x 1/8"	1/4"	7.35	7.99
1-1/2" x 3/16"	5/16"	10.94	11.80
1-3/4" x 3/16"	5/16"	12.62	13.48
2" x 3/16"	5/16"	14.30	15.16
2-1/4" x 3/16"	5/16"	15.87	16.74
2-1/2" x 3/16"	5/16"	17.55	18.42

Bearing Bars	Cross Bars	Lbs. per Sq. Ft.	
		Type 2A	Type 2B
3/4" x 1/8"	1/4"	4.95	5.59
3/4" x 3/16"	1/4"	7.11	7.75
1" x 1/8"	1/4"	6.44	7.08
1" x 3/16"	1/4"	9.27	9.91
1-1/4" x 1/8"	1/4"	7.79	8.43
1-1/4" x 3/16"	1/4"	11.43	12.07
1-1/2" x 1/8"	1/4"	9.27	9.91
1-1/2" x 3/16"	5/16"	13.82	14.68
1-3/4" x 3/16"	5/16"	15.98	16.84
2" x 3/16"	5/16"	18.14	19.00
2-1/4" x 3/16"	5/16"	20.16	21.03
2-1/2" x 3/16"	5/16"	22.32	23.19

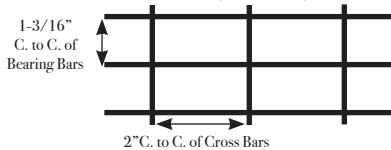
TYPE 1A - GENERAL DUTY



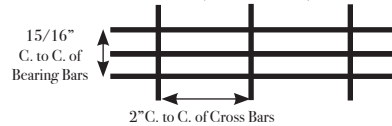
TYPE 2A - HEAVIER LOADS



TYPE 1B - SMALLER OPENINGS (STANDARD)



TYPE 2B - HEAVIEST LOADS (CLOSE SPACE)



## STAINLESS STEEL SELECTION GUIDE

**304 / 304L** - 304 Stainless Steel is a versatile general purpose steel with good resistance to atmospheric corrosion, many organic and inorganic chemicals, and to food and beverages. 304L has .03 maximum carbon and is used when extensive welding is called for.

**304H** - A modification of Type 304, this stainless steel has a controlled carbon content in a range of .04 to .010 for increased strength at temperatures above 800°F. Type 304H can not be hardened by heat treatment but can be hardened through cold working.

**316 / 316L** - A molybdenum stainless steel containing austenitic stainless intended to provide improved corrosion resistance.

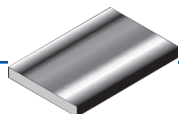
**317L** - A molybdenum steel containing austenitic stainless which provides improved corrosion resistance over 316 and 316L due to its higher moly content.

**904L** - Widely used in chemical processing plants. Its combination of chromium, nickel, moly and copper make it resistant to a range of sulfuric acid environments.

L= Low Carbon. Good for welding. .03 max carbon.

H= High Carbon. .04 carbon or higher.

## STAINLESS STEEL PLATE - TYPE 304/304L



- Hot Rolled, Annealed and Pickled
- Non-Magnetic (may be slightly magnetic when cold worked)
- ASTM A-167, ASTM A-240, and ASTM SA-240

Size	Lbs/Sq.Ft.	Est. Lbs/Ft.	Available Lengths	
			304	304L
3/16" x 48"	8.579	34.32	8,10,12,20	8,10,12,20
3/16" x 60"	8.579	42.90	8,10,12,20	8,10,12,20
3/16" x 72"	8.579	51.47	20,12,20R	-
3/16" x 84"	8.579	60.05	20R	-
3/16" x 96"	8.579	68.63	20R	20R
1/4" x 48"	11.16	44.64	8,10,12,20	8,10,12,20
1/4" x 60"	11.16	55.80	8,10,12,20	8,10,12,20
1/4" x 72"	11.16	66.96	20,12,20R	-
1/4" x 84"	11.16	78.12	20R	20R
1/4" x 96"	11.16	89.28	20R	20R
5/16" x 48"	13.75	55.00	8,10,12,20	-
5/16" x 84"	13.75	96.25	20R	-
5/16" x 96"	13.75	110.0	20R	-
3/8" x 48"	16.50	66.00	8,10,12,20R	-
3/8" x 60"	16.50	82.50	20R	20R
3/8" x 72"	16.50	99.00	20R	20R
3/8" x 96"	16.50	132.0	20R	20R
1/2" x 48"	21.66	86.64	8,10,12,20R	-
1/2" x 60"	21.66	108.3	20R	-
1/2" x 72"	21.66	130.0	20R	20R
1/2" x 96"	21.66	173.3	20R	20R
5/8" x 96"	26.83	214.6	20R	-
3/4" x 96"	32.12	257.0	20R	20R
7/8" x 96"	37.29	298.3	20R	-
1" x 96"	42.67	341.4	20R	20R
1-1/8" x 96"	47.83	382.6	20R	-
1-1/4" x 96"	53.00	424.0	20R	20R
1-1/2" x 96"	63.34	506.7	20R	20R
1-3/4" x 96"	73.67	589.4	20R	20R
2" x 96"	84.01	672.1	20R	20R
2-1/2" x 96"	105.1	840.8	-	20R
3" x 96"	126.3	1010.4	-	20R

## STAINLESS STEEL PLATE - TYPE 316/316L

- Hot Rolled, Annealed and Pickled
- Non-Magnetic (may be slightly magnetic when cold worked)
- ASTM A-167, ASTM A-240, and ASTM SA-240

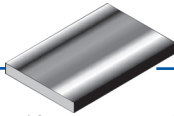
Size	Lbs/Sq.Ft.	Est. Lbs/Ft.	Available Lengths	
			316	316L
3/16" x 48"	8.579	34.32	8,10,12,20	8,10,12,20
3/16" x 60"	8.579	42.90	8,10,12,20	8,10,12,20
3/16" x 72"	8.579	51.47	20R	20R
3/16" x 84"	8.579	60.05	20R	20R
3/16" x 96"	8.579	68.63	20R	20R
1/4" x 48"	11.16	44.64	8,10,12,20	8,10,12,20
1/4" x 60"	11.16	55.80	8,10,12,20	8,10,12,20
1/4" x 72"	11.16	66.96	20R	20R
1/4" x 84"	11.16	78.12	20R	20R
1/4" x 96"	11.16	89.28	20R	20R
3/8" x 60"	16.50	82.50	20R	20R
3/8" x 72"	16.50	99.00	20R	20R
3/8" x 96"	16.50	132.00	20R	20R
1/2" x 72"	21.66	130.0	20R	20R
1/2" x 96"	21.66	173.3	20R	20R
5/8" x 96"	26.83	214.6	20R	20R
3/4" x 96"	32.12	257.0	20R	20R
7/8" x 96"	37.29	298.3	20R	20R
1" x 96"	42.67	341.4	20R	20R
1-1/4" x 96"	53.00	424.0	-	20R
1-1/2" x 96"	63.34	506.7	-	20R

## STAINLESS STEEL FLOOR PLATE - TYPE 304

- Hot Rolled, Annealed and Pickled
- Non-Magnetic
- ASTM A-793 Pattern B

Size	Dimensions	Lbs/Sq. Ft.
1/8"	48" x 120"	6.15
3/16"	48" x 96"	8.70
3/16"	48" x 120"	8.70
1/4"	48" x 120"	11.25

# STAINLESS STEEL SHEET



- Type 304: 2B or #3/#4 finish one side only. • Type 316: 2B
- Type 304: Cold Rolled, annealed, pickled. Finishes: 2B, #3, #4. QQS-763, AMS-5639, ASTM A276
- Type 316: Cold rolled, annealed, pickled. 2B and #3. QQS-766, ASTM A240, ASME SA240

Gauge	Size	Thickness	Lbs/Sq.Ft.	Lbs/Sheet	Finish	Part No.
7 GA	48" x 96"	.1875	7.871	251.9	2B	Y8032
7 GA	48" x 120"	.1875	7.871	314.8	-	-
7 GA	60" x 120"	.1875	7.871	393.6	-	-
10 GA	48" x 96"	.1350	5.670	181.4	-	-
10 GA	48" x 120"	.1350	5.670	226.8	-	-
10 GA	48" x 144"	.1350	5.670	272.2	-	-
10 GA	60" x 96"	.1350	5.670	226.8	-	-
10 GA	60" x 120"	.1350	5.670	283.5	316	Y8802
10 GA	60" x 144"	.1350	5.670	340.20	-	-
11 GA	48" x 96"	.1200	5.040	161.3	-	-
11 GA	48" x 120"	.1200	5.040	201.6	#3	Y8321
11 GA	48" x 120"	.1200	5.040		2B	Y8338
11 GA	48" x 144"	.1200	5.040	241.9	-	-
12 GA	48" x 120"	.1054	4.41	176.4	-	-
12 GA	48" x 144"	.1054	4.41	211.7	-	-
12 GA	60" x 96"	.1054	4.41	176.4	-	-
12 GA	60" x 120"	.1054	4.41	220.50	-	-
14 GA	48" x 96"	0.0751	3.154	80.64	2B	Y8603
14 GA	48" x 120"	0.0751	3.154	126.2	2B	Y8322
14 GA	48" x 144"	0.0751	3.154	151.4	-	-
14 GA	60" x 96"	0.0751	3.154	126.2	-	-
14 GA	60" x 120"	0.0751	3.154	157.7	-	-
14 GA	60" x 144"	0.0751	3.154	189.2	-	-
16 GA	48" x 120"	0.0595	2.52	100.8	Mill	Y8339
16 GA	48" x 120"	0.0595	2.52		#3	Y8457
16 GA	48" x 144"	0.0595	2.52	121.0	-	-
16 GA	60" x 96"	0.0595	2.52	100.8	-	-
16 GA	60" x 120"	0.0595	2.52	126.0	-	-
16 GA	60" x 144"	0.0595	2.52	151.20	-	-
18 GA	48" x 96"	0.0480	2.016	64.51	-	-
18 GA	48" x 120"	0.0480	2.016	80.64	-	-
18 GA	48" x 144"	0.0480	2.016	96.77	-	-
18 GA	60" x 120"	0.0480	2.016	100.8	-	-
18 GA	60" x 144"	0.0480	2.016	121.0	-	-
20 GA	48" x 96"	0.0355	1.512	48.4	-	-
20 GA	48" x 120"	0.0355	1.512	60.5	-	Y8319
20 GA	48" x 144"	0.0355	1.512	72.6	-	-
22 GA	48" x 144"	0.0293	1.26	60.5	-	-

# STAINLESS STEEL PIPE - SCH. 40 / SCH. 80

Stainless



- Hot Finished, Annealed and Pickled
- Type 304 and 316: ASTM A312, ASTM A376, MIL-P-1144
- Seamless
- Lengths: 20 Ft.
- Schedule 5 and Schedule 10 available by special order

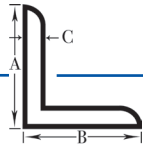
## Schedule 40 - Standard Iron Pipe Sizes

Size	Lbs/Ft.	Dimensions		Wall Thickness	Availability		Type	Part No.
		OD	ID		304	316		
1/4"					x	x	316	Y8311
1/2"					x	x	304L	YC110
3/4"	1.131	1.050"	.824"	.113"	x	x	304	YC112
1"	1.679	1.315	1.049	.133	x	x	304	YC114
1-1/4"	2.273	1.660	1.380	.140	x	x	304	YC116
1-1/2"	2.718	1.900	1.610	.145	x	x	304	YC118
2"	3.653	2.375	2.067	.154	x	x	304	YC120
2-1/2"	5.793	2.875	2.469	.203	x	-	304	Y8599
3"	7.576	3.500	3.068	.216	x	x	304	YC130
3-1/2"	9.109	4.000	3.548	.226	x	x	-	-
4"	10.79	4.500	4.026	.237	x	x	304	YC140
6"					x	x	304	Y8505
16"					-	x	316	Y8598

## Schedule 80 - Extra Heavy Iron Pipe Sizes

Size	Lbs/Ft.	Dimensions		Wall Thickness	Availability		Type	Part No.
		OD	ID		304	316		
1"	2.172	1.315"	.957"	.179"	x	-	-	-
1-1/4"	2.997	1.660	1.278	.191	x	-	-	-
1-1/2"	3.631	1.900	1.500	.200	x	-	-	-
2"	5.022	2.375	1.939	.218	x	-	-	-
2-1/2"	7.661	2.875	2.323	.276	x	-	304	Y8480
3"	10.25	3.500	2.900	.300	x	-	-	-
3-1/2"	12.51	4.000	3.364	.318	x	x	-	-
4"	14.98	4.500	3.826	.337	x	x	-	-

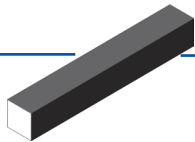
**STAINLESS STEEL ANGLES - TYPE 304/316**



- Annealed and Pickled
- Non-Magnetic (may be slightly magnetic when cold worked)
- ASTM A-276, ASTM A-479 and ASTM SA-479

Size	Est. Lbs.Ft.	Est. Lbs/20'		Type	Part No.
		304	316		
3/4" x 3/4" x 1/8"	0.59	11.80	-	-	-
1" x 1" x 1/8"	0.80	16.00	16.00	304	Y8333
1" x 1" x 3/16"	1.16	23.20	-	-	-
1" x 1" x 1/4"	1.49	29.80	-	-	-
1-1/4" x 1-1/4" x 1/8"	1.01	20.20	-	-	-
1-1/4" x 1-1/4" x 3/16"	1.48	29.60	-	-	-
1-1/4" x 1-1/4" x 1/4"	1.92	38.40	-	-	-
1-1/2" x 1-1/2" x 1/8"	1.23	24.60	24.60	-	-
1-1/2" x 1-1/2" x 3/16"	1.80	36.00	36.00	304	Y8330
1-1/2" x 1-1/2" x 1/4"	2.34	46.80	46.80	-	-
2" x 2" x 1/8"	1.65	33.00	-	-	-
2" x 2" x 3/16"	2.44	48.80	48.80	304	Y8502
2" x 2" x 1/4"	3.19	63.80	63.80	304	Y8331
2" x 2" x 3/8"	4.70	94.00	94.00	-	-
2-1/2" x 2-1/2" x 3/16"	3.07	61.40	-	-	-
2-1/2" x 2-1/2" x 1/4"	4.10	82.00	-	-	-
2-1/2" x 2-1/2" x 3/8"	5.90	118.0	-	-	-
3" x 3" x 1/4"	4.90	98.00	98.00	-	-
3" x 3" x 3/8"	7.20	144.00	144.00	304	Y8010
3-1/2" x 3-1/2" x 1/4"	5.80	116.00	-	-	-
4" x 4" x 1/4"	6.60	132.00	-	304	Y8335
4" x 4" x 3/8"	9.80	196.00	-	304	Y8797

**STAINLESS STEEL SQUARES**



- Type 304: QQS-763, AMS-5639, ASTM A276
- Type 303: QQS-764. AMS-5640. ASTM A-582, Cond A
- 10 - 14 Ft. Lengths

Size	Lbs.Ft.	303	304	Type	Part No.
1/8"	.053	x	-	-	-
3/16"	.120	x	-	-	-
1/4"	.214	x	x	-	-
5/16"	.332	x	-	-	-
3/8"	.481	x	x	304	Y8530
7/16"	.651	-	x	-	-
1/2"	.855	x	x	304	Y8532
5/8"	1.33	x	x	304	Y8239

Size	Lbs.Ft.	303	304	Type	Part No.
3/4"	1.92	x	x	304	Y8111
7/8"	2.62	x	-	-	-
1"	3.42	x	x	-	-
1-1/8"	4.30	x	-	-	-
1-1/4"	5.31	x	x	-	-
1-1/2"	7.65	x	x	304	Y8533
1-3/4"	10.41	x	-	-	-
2"	13.60	x	x	304	Y8499

**STAINLESS STEEL FLAT BAR - TYPE 304**

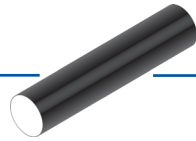
- Annealed and Pickled
- Non-Magnetic (may be slightly magnetic when cold worked)
- ASTM A-276, ASTM A-479 and ASTM SA-479
- Stock Lengths 12 Ft. Random



Size	Est. Lbs.Ft.	Est. Lbs/12'	Part No.
1/8" x 1/2"	.213	2.56	Y8323
1/8" x 3/4"	.320	3.84	-
1/8" x 1"	.425	5.10	Y8467
1/8" x 1-1/4"	.5315	6.38	-
1/8" x 1-1/2"	.638	7.66	Y8107
1/8" x 2"	.850	10.20	-
1/8" x 2-1/2"	1.05	12.60	Y8793
1/8" x 3"	1.28	15.36	-
1/8" x 4	1.70	20.40	Y8114
1/8" x 6	2.52	30.24	-
3/16" x 3/4"	.536	6.43	-
3/16" x 1"	.715	8.58	Y8516
3/16" x 1-1/4"	.894	10.73	-
3/16" x 1-1/2"	1.07	12.84	-
3/16" x 2"	1.43	17.16	Y8108
3/16" x 2-1/2"	1.787	21.44	-
3/16" x 3"	2.145	25.74	Y8794
3/16" x 4"	2.86	34.32	-
1/4" x 1"	.93	11.16	-
1/4" x 1-1/4"	1.16	13.92	-
1/4" x 1-1/2"	1.40	16.80	Y8154
1/4" x 2"	1.86	22.32	-
1/4" x 2-1/2"	2.33	27.96	-
1/4" x 3"	2.79	33.48	Y8128
1/4" x 4"	3.72	44.64	Y8112
1/4" x 5"	4.65	55.80	-
1/4" x 6"	5.58	66.96	-
1/4" x 8"	7.44	89.28	Y8120
3/8" x 1"	1.37	16.44	-
3/8" x 1-1/2"	2.06	24.72	-
3/8" x 2"	2.75	33.00	-
3/8" x 2-1/2"	3.44	41.28	-
3/8" x 3"	4.12	49.44	-
3/8" x 4"	5.5	66.00	-
3/8" x 6"	8.25	99.00	-

Size	Est. Lbs.Ft.	Est. Lbs/12'	Part No.
1/2" x 1"	1.81	21.72	-
1/2" x 1-1/2"	2.70	32.40	-
1/2" x 2"	3.61	43.32	Y8350
1/2" x 2-1/2"	4.51	54.12	-
1/2" x 3"	5.42	65.04	-
1/2" x 4"	7.22	86.64	-
1/2" x 4-1/2"	7.65	91.80	-
1/2" x 5"	8.50	102.0	-
1/2" x 6"	10.20	122.4	-
5/8" x 3/4"	1.594	19.13	-
5/8" x 1"	2.125	25.50	-
5/8" x 1-1/2"	3.188	38.26	-
5/8" x 2"	4.250	51.00	-
5/8" x 2-1/2"	5.313	63.76	-
5/8" x 3"	6.375	76.50	-
5/8" x 3-1/2"	7.438	89.26	-
5/8" x 4"	8.500	102.0	-
5/8" x 6"	12.75	153.0	-
3/4" x 1"	2.550	30.60	-
3/4" x 1-1/4"	3.188	38.26	-
3/4" x 1-1/2"	3.825	45.90	-
3/4" x 2"	5.100	61.20	-
3/4" x 2-1/2"	6.375	76.50	-
3/4" x 3"	7.650	91.80	-
3/4" x 4"	10.20	122.4	-
3/4" x 5"	12.75	153.0	-
3/4" x 6"	15.30	183.6	-
1" x 1-1/2"	5.100	61.20	-
1" x 1-3/4"	5.950	71.40	-
1" x 2"	6.800	81.60	-
1" x 2-1/2"	8.500	102.0	-
1" x 3"	10.20	122.4	-
1" x 4"	13.60	163.2	-
1" x 6"	20.40	244.8	-

**STAINLESS STEEL ROUNDS**



- Type 303: QQS-764. Specs: AMS-5640. ASTM A-582, Cond A
- Type 304: QQS-763. •Type 304L: ASTM-A479, ASME SA479
- Type 316: QQS-763 •Type 316L: ASTM-A276, ASTM-A479, ASME SA479
- Items highlighted in blue are stock items.

**Annealed and Cold Drawn (Wire)**

Size	Lbs./Ft.	303	304	316	Type	Part No.
3/32"	.023	x	-	-	-	-
1/8"	.042	x	x	-	304	Y9085
.132"	.047	x	-	-	-	-
5/32"	.065	x	-	-	-	-
3/16"	.094	x	x	x	-	-
.194"	.100	x	-	-	-	-
7/32"	.128	x	-	-	-	-
1/4"	.167	x	x	x	304	Y9080
.256"	.175	x	-	-	-	-
9/32"	.211	-	-	-	-	-
5/16"	.261	x	x	x	-	-
11/32"	.316	-	-	-	-	-
.372"	.369	x	-	-	-	-
3/8"	.376	x	x	x	304	Y9082
.383"	.392	x	-	-	-	-
7/16"	.511	x	x	x	-	-
.431"	.496	-	-	-	-	-
.445"	.529	x	-	-	-	-
1/2"	.668	x	x	x	-	-
5/8"	1.043	-	-	-	-	-

**Hot Rolled, Annealed & Rough Turned**

Size	Lbs./Ft.	303	304	316	Part No.
4-1/4"	48.23	x	x	x	-
4-1/2"	54.07	x	x	x	-
4-3/4"	60.25	x	x	x	-
5"	66.76	x	x	x	-
5-1/4"	73.60	-	x	x	-
5-1/2"	80.77	x	x	x	-
5-3/4"	88.29	-	-	x	-
6"	96.13	x	x	x	-
6-1/4"	104.3	-	-	x	-
6-1/2"	112.8	-	-	x	-
6-3/4"	121.7	-	-	x	-
7"	130.9	-	x	-	-
7-1/4"	140.4	-	-	x	-
7-1/2"	150.2	-	-	x	-
8"	170.9	-	x	-	-
8-1/2"	192.9	-	-	x	-
9"	216.3	-	-	x	-
10"	267.0	-	x	-	-
12"	384.5	-	x	-	-

**Annealed and Centerless Ground**

Size	Est. Lbs./Ft.	303	304	316	Type	Part No.
3/16"		-	x	-	304	Y8324
7/32"	.754	-	-	-	-	-
5/16"			x		304	Y8490
1/2"	.668	x	-	-	304	Y9084
.508"	.689	x	-	-	-	-
9/16"	.845	x	x	-	-	-
5/8"	1.043	x	x	x	304	Y9086
.633"	1.07	x	-	-	-	-
11/16"	1.262	x	x	x	-	-
3/4"	1.502	x	x	x	304	Y8306
.758"	1.53	x	-	-	-	-
13/16"	1.763	x	x	x	-	-

**Annealed and Centerless Ground (con't)**

Size	Est. Lbs./Ft.	303	304	316	Type	Part No.
7/8"	2.045	x	x	x	304	Y8359
29/32"	2.193	-	-	-	-	-
.999"		-	x	-	304	Y8312
1"		-	x	-	304	Y9083
1-1/4"		-	x	-	304	Y8309
1-3/16"		-	x	-	304	Y8313
1-5/16"	4.60	x	x	-	-	-
1-3/8"	5.05	x	x	x	304	Y8105
1-7/16"	5.52	x	x	x	304	Y8360
1-1/2"	6.01	x	x	x	304	Y8310
1-9/16"	6.52	x	x	x	-	-
1-5/8"	7.05	x	x	x	-	-
1-11/16"	7.60	x	-	-	-	-
1-3/4"	8.18	x	x	x	-	-
1-7/8"	9.39	x	x	x	-	-
1-15/16"	10.02	x	x	x	-	-
2"	10.68	x	x	x	304	Y8772
2-1/8"	12.06	x	x	x	-	-
2-3/16"	12.78	x	x	x	-	-
2-1/4"	13.52	x	x	x	304	Y8544
2-9/32"	13.90	-	-	-	-	-
2-3/8"	15.06	x	x	x	-	-
2-7/16"	15.87	x	x	-	-	-
2-1/2"	16.69	x	x	x	-	-
2.526"	17.04	-	x	-	-	-
2-5/8"	18.40	x	x	x	-	-
2-3/4"	20.19	x	x	x	-	-
2-7/8"	22.07	x	x	x	-	-
2-15/16"	23.04	-	x	x	-	-
3"	24.03	x	x	x	-	-
3-1/8"	26.08	x	x	x	-	-
3-3/8"	30.42	x	x	x	-	-
3-1/2"	32.71	x	x	x	-	-
3-5/8"	35.09	-	x	x	-	-
3-3/4"	37.55	x	x	x	-	-
4"	42.73	x	x	x	-	-
4-1/2"	54.07	-	x	-	-	-